



MATTHEW PITT

Height 6'2" / 188cm

Chest 39" / 99cm Waist 31" / 79cm Inseam 34" / 86cm Suit 41" / 104cm / 51 Shoes 10 US / 43.5

EU / 9.5 UK

Hair Auburn Red Eyes Blue



anm
MANAGEMENT

1159 Dundas St. E, #148 Toronto, ON M4M 3N9

Email: info@anm-mgmt.com Tel: 1.416.792.0357

www.anm-mgmt.com



Look LOEWE, Sandalen PRIVAT



MATTHEW PITT

Height 6'2" / 188cm

Chest 39" / 99cm Waist 31" / 79cm Inseam 34" / 86cm Suit 41" / 104cm / 51 Shoes 10 US / 43.5

EU / 9.5 UK

Hair Auburn Red Eyes Blue

anm
MANAGEMENT

1159 Dundas St. E, #148 Toronto, ON M4M 3N9

Email: info@anm-mgmt.com Tel: 1.416.792.0357

www.anm-mgmt.com



MATTHEW PITT

Height 6'2" / 188cm

Chest 39" / 99cm Waist 31" / 79cm Inseam 34" / 86cm Suit 41" / 104cm / 51 Shoes 10 US / 43.5

EU / 9.5 UK

Hair Auburn Red Eyes Blue



anm
MANAGEMENT

1159 Dundas St. E, #148 Toronto, ON M4M 3N9

Email: info@anm-mgmt.com Tel: 1.416.792.0357

www.anm-mgmt.com



MATTHEW PITT

Height 6'2" / 188cm

Chest 39" / 99cm Waist 31" / 79cm Inseam 34" / 86cm Suit 41" / 104cm / 51 Shoes 10 US / 43.5

EU / 9.5 UK

Hair Auburn Red Eyes Blue



anm
MANAGEMENT

1159 Dundas St. E, #148 Toronto, ON M4M 3N9

Email: info@anm-mgmt.com Tel: 1.416.792.0357

www.anm-mgmt.com



MATTHEW PITT

Height 6'2" / 188cm

Chest 39" / 99cm Waist 31" / 79cm Inseam 34" / 86cm Suit 41" / 104cm / 51 Shoes 10 US / 43.5

EU / 9.5 UK

Hair Auburn Red Eyes Blue



anm
MANAGEMENT

1159 Dundas St. E, #148 Toronto, ON M4M 3N9

Email: info@anm-mgmt.com Tel: 1.416.792.0357

www.anm-mgmt.com



MATTHEW PITT

Height 6'2" / 188cm

Chest 39" / 99cm Waist 31" / 79cm Inseam 34" / 86cm Suit 41" / 104cm / 51 Shoes 10 US / 43.5

EU / 9.5 UK

Hair Auburn Red Eyes Blue



anm
MANAGEMENT

1159 Dundas St. E, #148 Toronto, ON M4M 3N9
Email: info@anm-mgmt.com Tel: 1.416.792.0357
www.anm-mgmt.com



MATTHEW PITT

Height 6'2" / 188cm

Chest 39" / 99cm Waist 31" / 79cm Inseam 34" / 86cm Suit 41" / 104cm / 51 Shoes 10 US / 43.5

EU / 9.5 UK

Hair Auburn Red Eyes Blue



Wool belted coat, cotton poplin shirt, velvet jacquard trousers, and calfskin leather mountain boots *Emporio Armani*

(Opposite) shearling coat *Saint Laurent* by Anthony Vaccarello

anm
MANAGEMENT

1159 Dundas St. E, #148 Toronto, ON M4M 3N9

Email: info@anm-mgmt.com Tel: 1.416.792.0357

www.anm-mgmt.com



MATTHEW PITT

Height 6'2" / 188cm

Chest 39" / 99cm Waist 31" / 79cm Inseam 34" / 86cm Suit 41" / 104cm / 51 Shoes 10 US / 43.5

EU / 9.5 UK

Hair Auburn Red Eyes Blue



anm
MANAGEMENT

1159 Dundas St. E, #148 Toronto, ON M4M 3N9
Email: info@anm-mgmt.com Tel: 1.416.792.0357
www.anm-mgmt.com



MATTHEW PITT

Height 6'2" / 188cm

Chest 39" / 99cm Waist 31" / 79cm Inseam 34" / 86cm Suit 41" / 104cm / 51 Shoes 10 US / 43.5

EU / 9.5 UK

Hair Auburn Red Eyes Blue

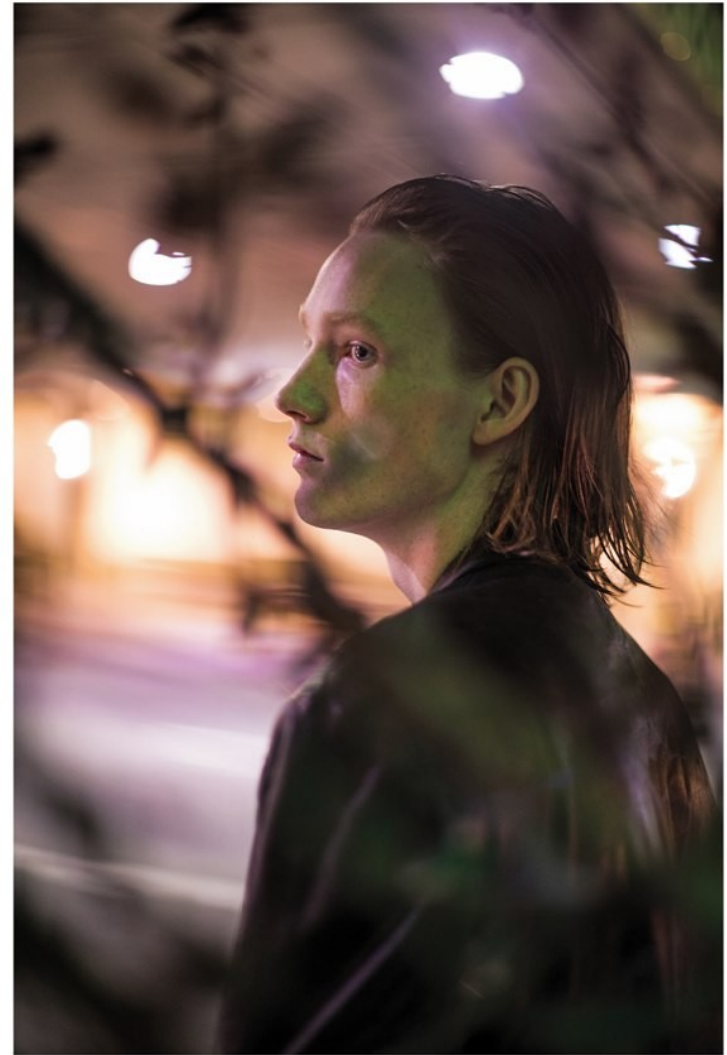


anm
MANAGEMENT

1159 Dundas St. E, #148 Toronto, ON M4M 3N9
Email: info@anm-mgmt.com Tel: 1.416.792.0357
www.anm-mgmt.com



Look DIOR HOMME



MATTHEW PITT

Height 6'2" / 188cm

Chest 39" / 99cm Waist 31" / 79cm Inseam 34" / 86cm Suit 41" / 104cm / 51 Shoes 10 US / 43.5

EU / 9.5 UK

Hair Auburn Red Eyes Blue

anm
MANAGEMENT

1159 Dundas St. E, #148 Toronto, ON M4M 3N9
Email: info@anm-mgmt.com Tel: 1.416.792.0357
www.anm-mgmt.com



MATTHEW PITT

Height 6'2" / 188cm

Chest 39" / 99cm Waist 31" / 79cm Inseam 34" / 86cm Suit 41" / 104cm / 51 Shoes 10 US / 43.5

EU / 9.5 UK

Hair Auburn Red Eyes Blue



anm
MANAGEMENT

1159 Dundas St. E, #148 Toronto, ON M4M 3N9
Email: info@anm-mgmt.com Tel: 1.416.792.0357
www.anm-mgmt.com



MATTHEW PITT

Height 6'2" / 188cm

Chest 39" / 99cm Waist 31" / 79cm Inseam 34" / 86cm Suit 41" / 104cm / 51 Shoes 10 US / 43.5 EU / 9.5 UK

Hair Auburn Red Eyes Blue

anm
MANAGEMENT

1159 Dundas St. E, #148 Toronto, ON M4M 3N9
Email: info@anm-mgmt.com Tel: 1.416.792.0357
www.anm-mgmt.com