



CHRISTINA KRUSE

Height 5'11" / 180cm

Bust 34" / 86cm Waist 24" / 61cm Hips 35" / 89cm Dress 0 - 2 US / 30 - 32 EU / 2 - 4

UK Shoes 9.5 US / 40.5 EU / 7 UK

Hair Blonde Eyes Blue



anm
MANAGEMENT

1159 Dundas St. E, #148 Toronto, ON M4M 3N9

Email: info@anm-mgmt.com Tel: 1.416.792.0357

www.anm-mgmt.com



CHRISTINA KRUSE

Height 5'11" / 180cm

Bust 34" / 86cm Waist 24" / 61cm Hips 35" / 89cm Dress 0 - 2 US / 30 - 32 EU / 2 - 4

UK Shoes 9.5 US / 40.5 EU / 7 UK

Hair *Blonde* Eyes *Blue*



anm
MANAGEMENT

1159 Dundas St. E, #148 Toronto, ON M4M 3N9
Email: info@anm-mgmt.com Tel: 1.416.792.0357
www.anm-mgmt.com



CHRISTINA KRUSE

Height 5'11" / 180cm

Bust 34" / 86cm Waist 24" / 61cm Hips 35" / 89cm Dress 0 - 2 US / 30 - 32 EU / 2 - 4

UK Shoes 9.5 US / 40.5 EU / 7 UK

Hair Blonde Eyes Blue



SILVER FOX
 Going gray looks so glamorous. MaxMara wool-and-alpaca coat with fox trim. \$4,390; MaxMara, NYC. In this story: hair, Guido for Redken; makeup, Pat McGrath. Production design, Mary Howard. Details, see in This Issue.

anm
 MANAGEMENT

1159 Dundas St. E, #148 Toronto, ON M4M 3N9
 Email: info@anm-mgmt.com Tel: 1.416.792.0357
www.anm-mgmt.com



CHRISTINA KRUSE

Height 5'11" / 180cm

Bust 34" / 86cm Waist 24" / 61cm Hips 35" / 89cm Dress 0 - 2 US / 30 - 32 EU / 2 - 4

UK Shoes 9.5 US / 40.5 EU / 7 UK

Hair *Blonde* Eyes *Blue*



anm
MANAGEMENT

1159 Dundas St. E, #148 Toronto, ON M4M 3N9

Email: info@anm-mgmt.com Tel: 1.416.792.0357

www.anm-mgmt.com



CHRISTINA KRUSE

Height 5'11" / 180cm

Bust 34" / 86cm Waist 24" / 61cm Hips 35" / 89cm Dress 0 - 2 US / 30 - 32 EU / 2 - 4

UK Shoes 9.5 US / 40.5 EU / 7 UK

Hair *Blonde* Eyes *Blue*



anm
MANAGEMENT

1159 Dundas St. E, #148 Toronto, ON M4M 3N9
Email: info@anm-mgmt.com Tel: 1.416.792.0357
www.anm-mgmt.com



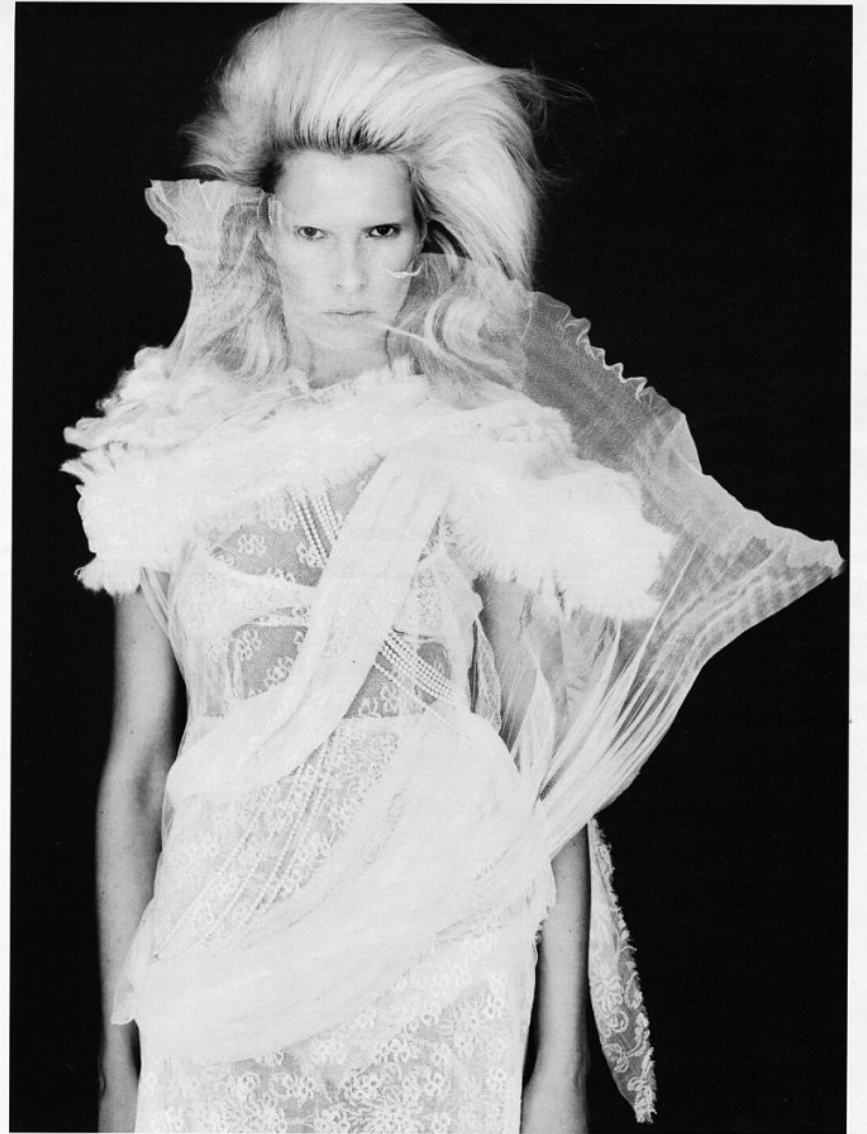
CHRISTINA KRUSE

Height 5'11" / 180cm

Bust 34" / 86cm Waist 24" / 61cm Hips 35" / 89cm Dress 0 - 2 US / 30 - 32 EU / 2 - 4

UK Shoes 9.5 US / 40.5 EU / 7 UK

Hair *Blonde* Eyes *Blue*



anm
MANAGEMENT

1159 Dundas St. E, #148 Toronto, ON M4M 3N9

Email: info@anm-mgmt.com Tel: 1.416.792.0357

www.anm-mgmt.com



CHRISTINA KRUSE

Height 5'11" / 180cm

Bust 34" / 86cm Waist 24" / 61cm Hips 35" / 89cm Dress 0 - 2 US / 30 - 32 EU / 2 - 4

UK Shoes 9.5 US / 40.5 EU / 7 UK

Hair Blonde Eyes Blue



anm
MANAGEMENT

1159 Dundas St. E, #148 Toronto, ON M4M 3N9
Email: info@anm-mgmt.com Tel: 1.416.792.0357
www.anm-mgmt.com



CHRISTINA KRUSE

Height 5'11" / 180cm

Bust 34" / 86cm Waist 24" / 61cm Hips 35" / 89cm Dress 0 - 2 US / 30 - 32 EU / 2 - 4

UK Shoes 9.5 US / 40.5 EU / 7 UK

Hair Blonde Eyes Blue



anm
MANAGEMENT

1159 Dundas St. E, #148 Toronto, ON M4M 3N9

Email: info@anm-mgmt.com Tel: 1.416.792.0357

www.anm-mgmt.com



CHRISTINA KRUSE

Height 5'11" / 180cm

Bust 34" / 86cm Waist 24" / 61cm Hips 35" / 89cm Dress 0 - 2 US / 30 - 32 EU / 2 - 4

UK Shoes 9.5 US / 40.5 EU / 7 UK

Hair Blonde Eyes Blue



anm
MANAGEMENT

1159 Dundas St. E, #148 Toronto, ON M4M 3N9
Email: info@anm-mgmt.com Tel: 1.416.792.0357
www.anm-mgmt.com



Christina KRUSE

CHRISTINA KRUSE NEVER SAW MODELING AS A LASTING CAREER. "I DON'T FEEL LIKE I'M IN A MANSERVANT'S ABILITY TO MAKE SOMEbody SMILE BECAUSE IN THE END, I'M A FRIEND WHO GETS THE BUDGET TO GET INTO OTHER COUNTRIES. I DON'T WANT TO BE MY OWN BEST FRIEND," SAYS KRUSE, WHO HANDBOWS HER PHOTOGRAPHIC SELF-PORTRAIT AT NEW YORK'S P.S. 125 GALLERY. SHE HOLDS HER MODELING EXPERIENCES DEAR. "I'VE HAD SOME OF THE BEST PHOTOGRAPHERS, SET LISTS, AND PROBABLY THE BEST HANDBOWS IN A ROOM AVAILABLE TO ME."

COAT: PENDI; SHOES AND JEANS: STAUDER; HAT: VETEMENTS; BRACELETS: LISI MORIAS AND KRUSE'S OWN.



SMEAR TACTICS
Women's rights activists seize on classic (read: antiquated) markers of femininity, like the red-painted pot and wipe them away in a long, swooning, messy gesture. What's left is a look that does not seek admiration.

CHRISTINA KRUSE WEARS
Jacket, hat, earrings, necklace PRADA
Bracelet: CARTIER HIGH JEWELRY

CHRISTINA KRUSE

Height 5'11" / 180cm

Bust 34" / 86cm Waist 24" / 61cm Hips 35" / 89cm Dress 0 - 2 US / 30 - 32 EU / 2 - 4

UK Shoes 9.5 US / 40.5 EU / 7 UK

Hair Blonde Eyes Blue

anm
MANAGEMENT

1159 Dundas St. E, #148 Toronto, ON M4M 3N9
Email: info@anm-mgmt.com Tel: 1.416.792.0357
www.anm-mgmt.com