



## **CRIS URENA**

Height 5'9.5" / 177cm

Bust 32" / 81cm Waist 26.5" / 67cm Hips 36" / 91cm Dress 2 US / 32 EU / 4 UK Shoes 10  
US / 41 EU / 7 UK

Hair *Dark Brown* Eyes *Brown*



**anm**  
MANAGEMENT

1159 Dundas St. E, #148 Toronto, ON M4M 3N9  
Email: [info@anm-mgmt.com](mailto:info@anm-mgmt.com) Tel: 1.416.792.0357  
[www.anm-mgmt.com](http://www.anm-mgmt.com)



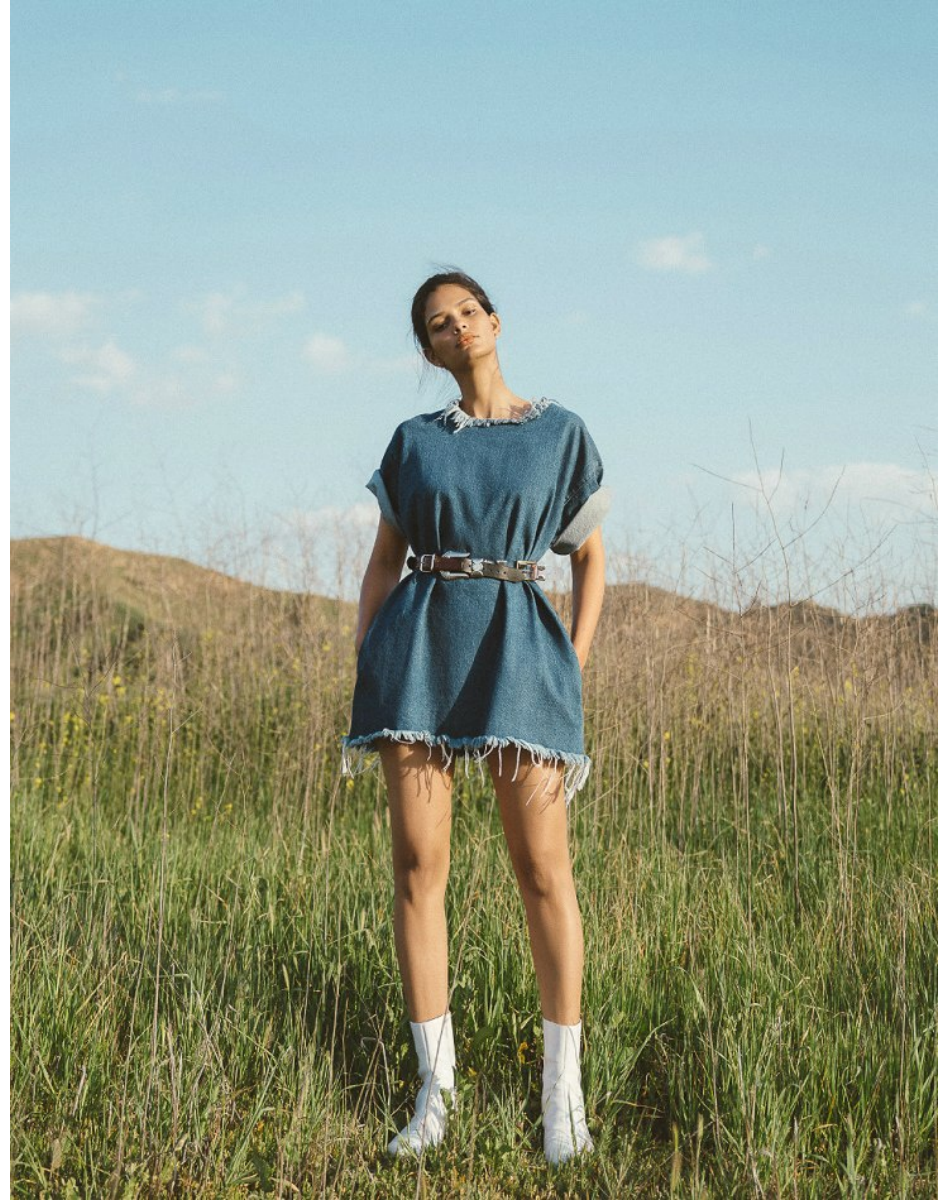


## **CRIS URENA**

Height 5'9.5" / 177cm

Bust 32" / 81cm Waist 26.5" / 67cm Hips 36" / 91cm Dress 2 US / 32 EU / 4 UK Shoes 10  
US / 41 EU / 7 UK

Hair *Dark Brown* Eyes *Brown*



**anm**  
MANAGEMENT

1159 Dundas St. E, #148 Toronto, ON M4M 3N9  
Email: [info@anm-mgmt.com](mailto:info@anm-mgmt.com) Tel: 1.416.792.0357  
[www.anm-mgmt.com](http://www.anm-mgmt.com)





**CRIS URENA**

Height 5'9.5" / 177cm

Bust 32" / 81cm Waist 26.5" / 67cm Hips 36" / 91cm Dress 2 US / 32 EU / 4 UK Shoes 10

US / 41 EU / 7 UK

Hair Dark Brown Eyes Brown



**BLUE SMOKE**

One of our favorite takeaways from the spring runway shows: A smoky eye doesn't have to be charcoal. At Giorgio Armani, eyes were surrounded with clouds of lime green; at Burberry Prorsum, the haze was dusty rose. Mia Mia did vibrant blue — a look that inspired the makeup artist Maud Luceppe to create the azure-ringed peepers seen here. She employed the typical smoky-eye technique — vigorously blending shadow up to the brow and below the lower lid — using an intensely pigmented swimming pool aqua instead of the typical gray. The result, Luceppe says, "is strong but not heavy at all." —A.L.

**anm**  
MANAGEMENT

1159 Dundas St. E, #148 Toronto, ON M4M 3N9  
Email: [info@anm-mgmt.com](mailto:info@anm-mgmt.com) Tel: 1.416.792.0357  
[www.anm-mgmt.com](http://www.anm-mgmt.com)





## **CRIS URENA**

Height 5'9.5" / 177cm

Bust 32" / 81cm Waist 26.5" / 67cm Hips 36" / 91cm Dress 2 US / 32 EU / 4 UK Shoes 10  
US / 41 EU / 7 UK

Hair *Dark Brown* Eyes *Brown*



**anm**  
MANAGEMENT

1159 Dundas St. E, #148 Toronto, ON M4M 3N9  
Email: [info@anm-mgmt.com](mailto:info@anm-mgmt.com) Tel: 1.416.792.0357  
[www.anm-mgmt.com](http://www.anm-mgmt.com)





Stretch chiffon sleeveless top, \$1595. Skirt, \$1950; both, Proenza Schouler. Hat, Proenza Schouler. NYC. Straw hat, Yestadt Millinery, \$385. Resin bangles, Kenneth Jay Lane, \$45-\$60.

ELLE 244 www.elle.com

## CRIS URENA

Height 5'9.5" / 177cm

Bust 32" / 81cm Waist 26.5" / 67cm Hips 36" / 91cm Dress 2 US / 32 EU / 4 UK Shoes 10 US / 41 EU / 7 UK

Hair Dark Brown Eyes Brown



Retro zipper trim maillot, \$296. Striped cashmere crewneck, \$995. Lucite goggles, Lucite neck cuff, Lucite bracelets, prices on request, all, Michael Kors. call 866.709.KORS. Yellow gold earrings, Roberto Cain, \$2,300. For details, see Shopping Guide.

www.elle.com 245 ELLE

**anm**  
MANAGEMENT

1159 Dundas St. E, #148 Toronto, ON M4M 3N9  
Email: info@anm-mgmt.com Tel: 1.416.792.0357  
www.anm-mgmt.com





**CRIS URENA**

Height 5'9.5" / 177cm

Bust 32" / 81cm Waist 26.5" / 67cm Hips 36" / 91cm Dress 2 US / 32 EU / 4 UK Shoes 10  
US / 41 EU / 7 UK

Hair *Dark Brown* Eyes *Brown*



**anm**  
MANAGEMENT

1159 Dundas St. E, #148 Toronto, ON M4M 3N9  
Email: [info@anm-mgmt.com](mailto:info@anm-mgmt.com) Tel: 1.416.792.0357  
[www.anm-mgmt.com](http://www.anm-mgmt.com)

classic



**PICK B&W ACCESSORIES**  
Give your work wardrobe a makeover in the form of rich textures and Crayola-colorful pants. The flowers for this 9-to-5 look? In accessories. Clutch, Jason Wu; blazer, Rochas; shirt, Emilio Pucci; trousers, Club Monaco; earring, Dior; heels, Oscar de la Renta. Swipe to end for Shopping Information.



**CRIS URENA**

Height 5'9.5" / 177cm

Bust 32" / 81cm Waist 26.5" / 67cm Hips 36" / 91cm Dress 2 US / 32 EU / 4 UK Shoes 10

US / 41 EU / 7 UK

Hair Dark Brown Eyes Brown

retro



**BRING THE GLAM**  
Going somewhere warm this winter? (A warm nightclub counts.) Chanel 1950s sex appeal with a matching bra top and skirt. For luminous skin like hers, we like Lancôme Bienfait Tinté Beauty Balm in Caramel (\$45, [lancome.com](http://lancome.com)). Cardigan, bandeau, skirt, Michael Kors; earring (worn as ring), Delfina Delettrez. Swipe to end for Shopping Information.



**anm**  
MANAGEMENT

1159 Dundas St. E, #148 Toronto, ON M4M 3N9

Email: [info@anm-mgmt.com](mailto:info@anm-mgmt.com) Tel: 1.416.792.0357

[www.anm-mgmt.com](http://www.anm-mgmt.com)



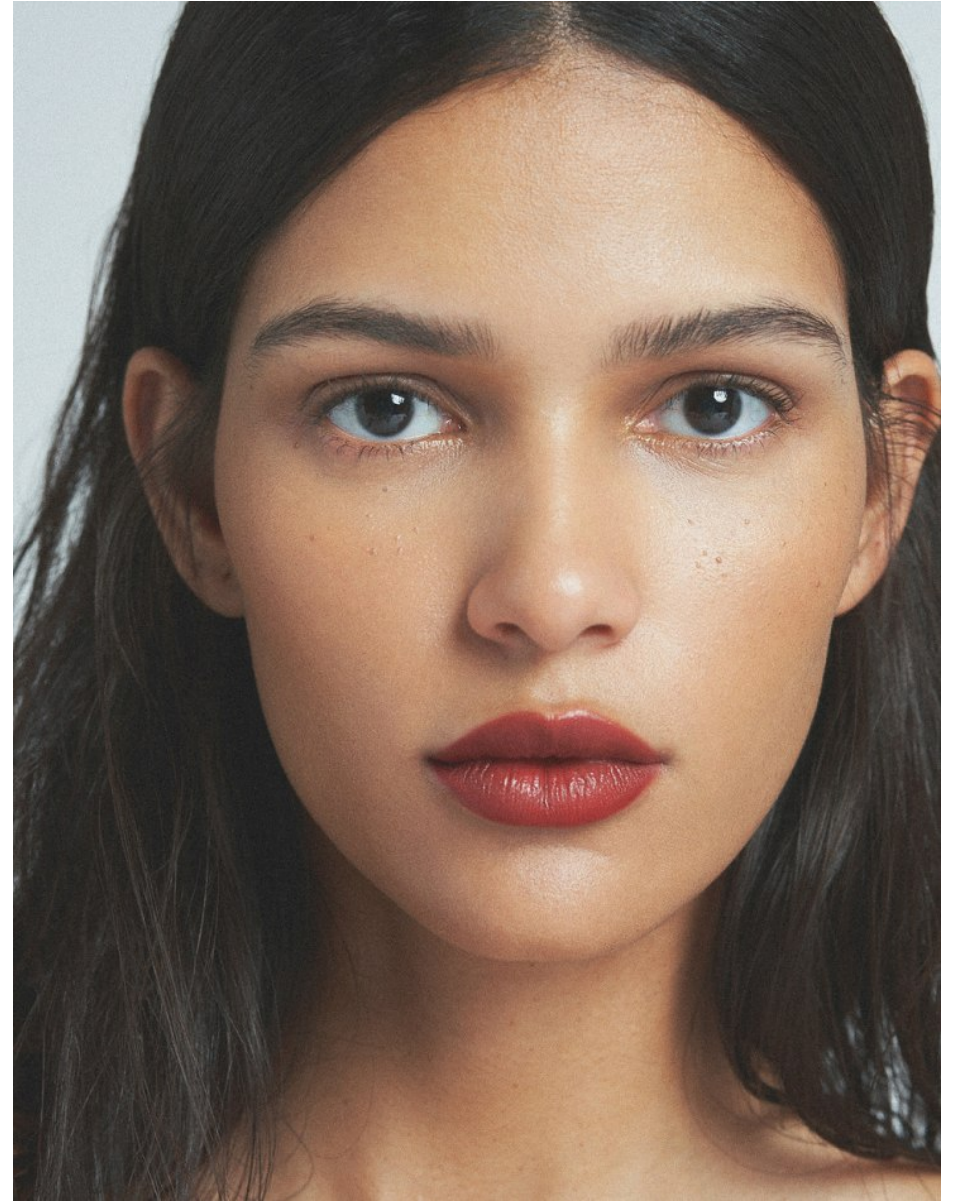


**CRIS URENA**

Height 5'9.5" / 177cm

Bust 32" / 81cm Waist 26.5" / 67cm Hips 36" / 91cm Dress 2 US / 32 EU / 4 UK Shoes 10  
US / 41 EU / 7 UK

Hair Dark Brown Eyes Brown



**anm**  
MANAGEMENT

1159 Dundas St. E, #148 Toronto, ON M4M 3N9  
Email: [info@anm-mgmt.com](mailto:info@anm-mgmt.com) Tel: 1.416.792.0357  
[www.anm-mgmt.com](http://www.anm-mgmt.com)





## **CRIS URENA**

Height 5'9.5" / 177cm

Bust 32" / 81cm Waist 26.5" / 67cm Hips 36" / 91cm Dress 2 US / 32 EU / 4 UK Shoes 10  
US / 41 EU / 7 UK

Hair *Dark Brown* Eyes *Brown*



**anm**  
MANAGEMENT

1159 Dundas St. E, #148 Toronto, ON M4M 3N9  
Email: [info@anm-mgmt.com](mailto:info@anm-mgmt.com) Tel: 1.416.792.0357  
[www.anm-mgmt.com](http://www.anm-mgmt.com)



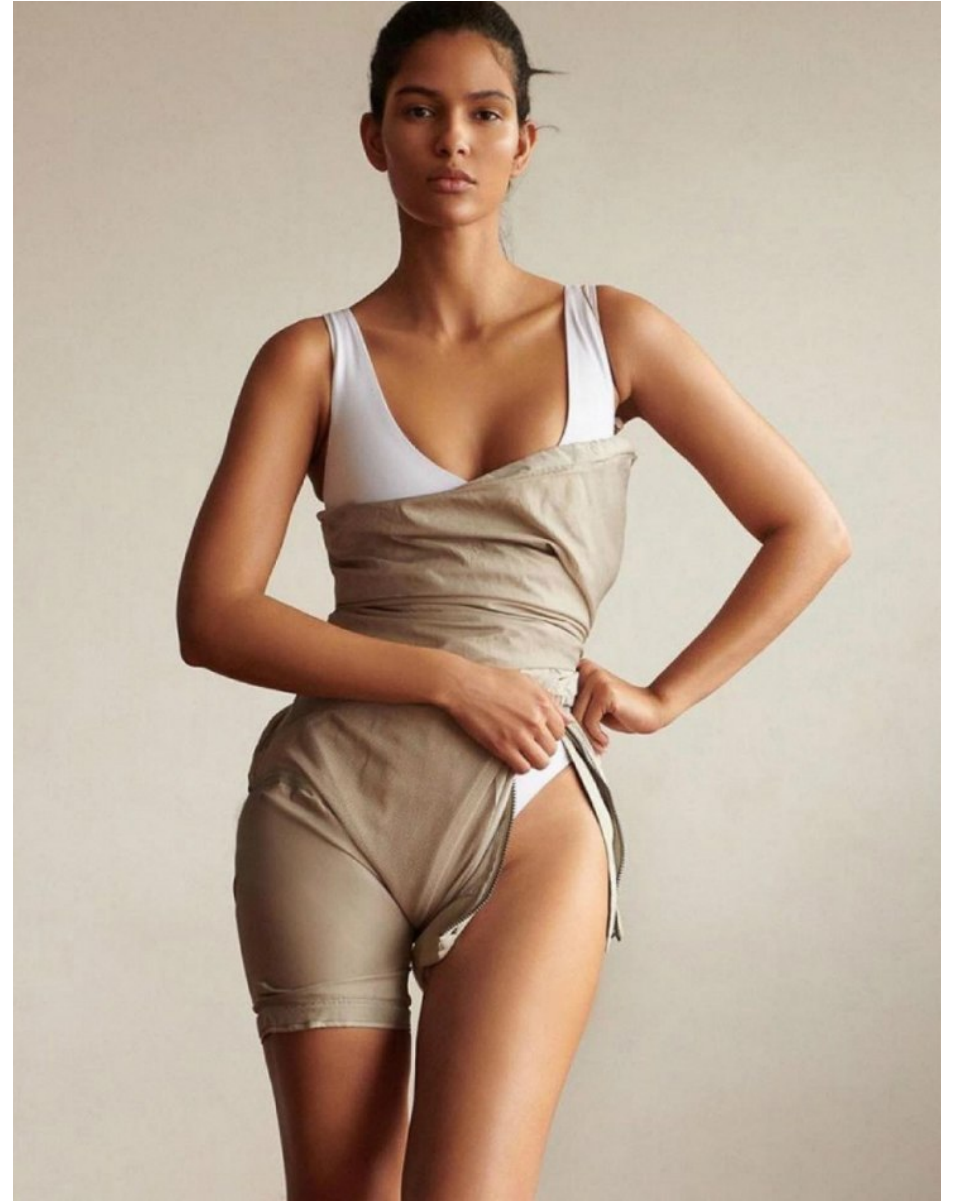


**CRIS URENA**

Height 5'9.5" / 177cm

Bust 32" / 81cm Waist 26.5" / 67cm Hips 36" / 91cm Dress 2 US / 32 EU / 4 UK Shoes 10  
US / 41 EU / 7 UK

Hair Dark Brown Eyes Brown



**anm**  
MANAGEMENT

1159 Dundas St. E, #148 Toronto, ON M4M 3N9  
Email: [info@anm-mgmt.com](mailto:info@anm-mgmt.com) Tel: 1.416.792.0357  
[www.anm-mgmt.com](http://www.anm-mgmt.com)