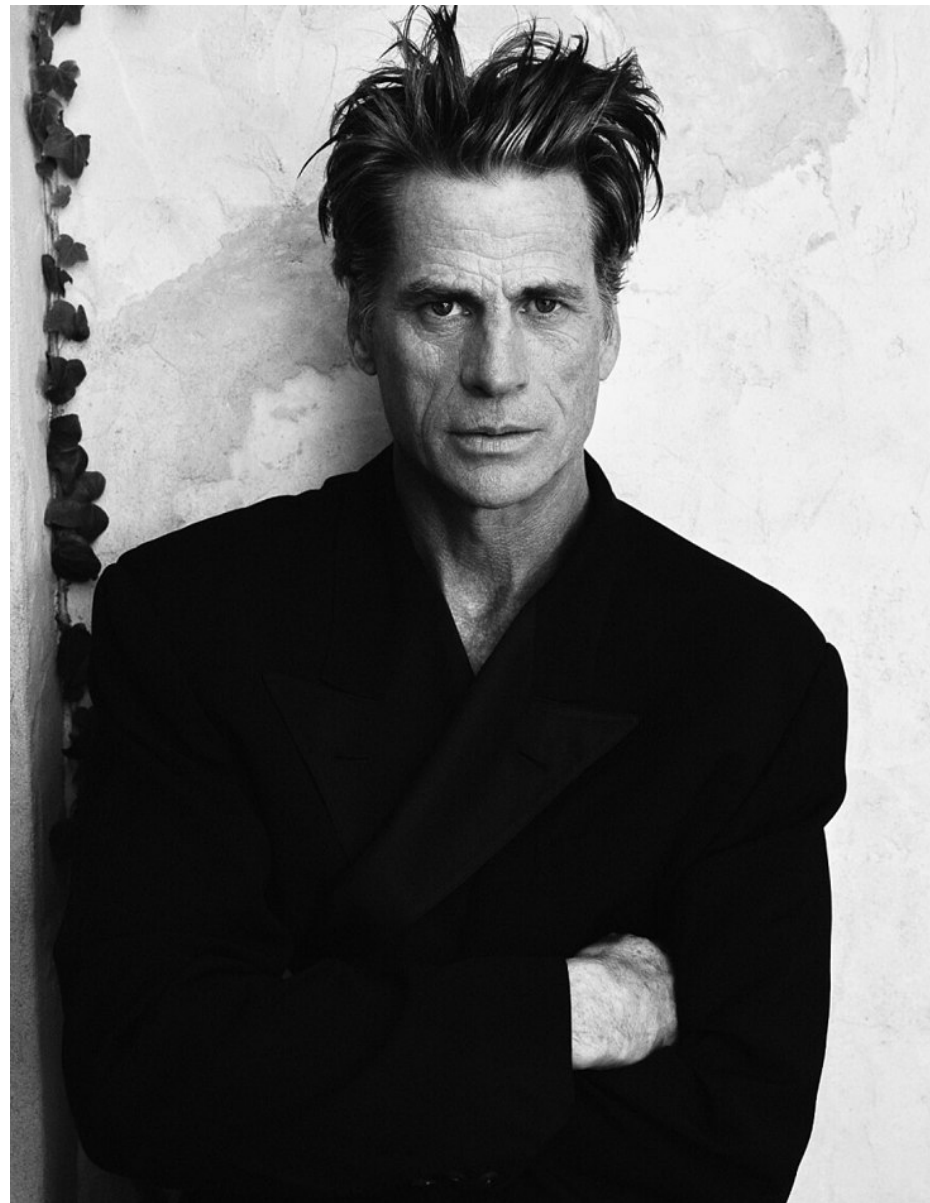


MARK VANDERLOO

Height 6'1" / 185cm

Chest 38" / 96cm Waist 32" / 81cm Suit 40" / 101cm / 50 Shoes 9.5 US / 43 EU / 9 UK

Hair Salt and Pepper Eyes Blue



anm
MANAGEMENT

1159 Dundas St. E, #148 Toronto, ON M4M 3N9
Email: info@anm-mgmt.com Tel: 1.416.792.0357
www.anm-mgmt.com

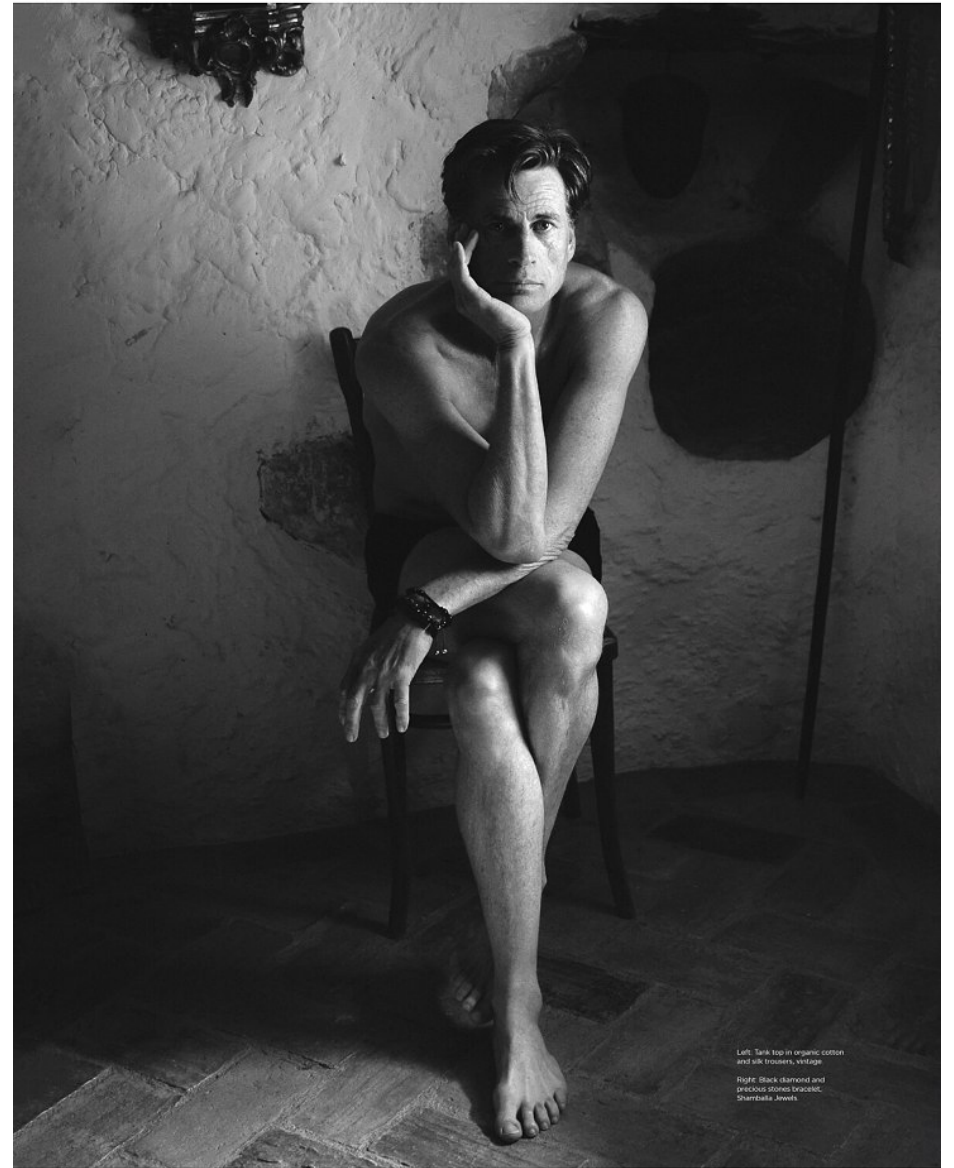


MARK VANDERLOO

Height 6'1" / 185cm

Chest 38" / 96cm Waist 32" / 81cm Suit 40" / 101cm / 50 Shoes 9.5 US / 43 EU / 9 UK

Hair Salt and Pepper Eyes Blue



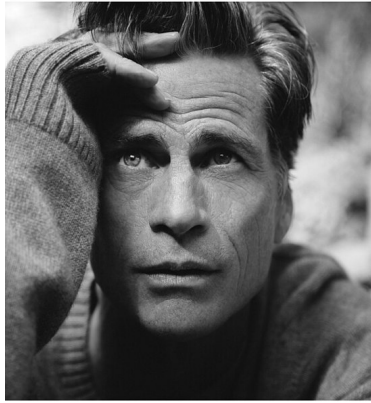
Left: Tank top in organic cotton
and silk trousers, vintage
Right: Black diamond and
pinkish tones bracelet,
Shambhala Jewels

anm
MANAGEMENT

1159 Dundas St. E, #148 Toronto, ON M4M 3N9

Email: info@anm-mgmt.com Tel: 1.416.792.0357

www.anm-mgmt.com



In Between Takes with **MARK VANDERLOO**

Mark Vanderloo was one of the first male supermodels, known widely for his work with Calvin Klein in the 1990s. He is also an actor and father to two children, Emma and Mark.

PHOTOGRAPHY BY PHILIPPE VOGELZANG
FASHION DIRECTION BY DANIELA AGNELLI



FATHER OF THE MAN

The customary shedding of layers for the summer months finds the opportunity to build a less inhibited, brightly colored wardrobe that combines elegance and playfulness. A summer retreat with father and son demonstrates how it is done.

photography *dirga sardono* fashion direction *green glitz*
Special thanks to: Massimo



MARK VANDERLOO

Height 6'1" / 185cm

Chest 38" / 96cm Waist 32" / 81cm Suit 40" / 101cm / 50 Shoes 9.5 US / 43 EU / 9 UK

Hair Salt and Pepper Eyes Blue

anm
MANAGEMENT

1159 Dundas St. E, #148 Toronto, ON M4M 3N9

Email: info@anm-mgmt.com Tel: 1.416.792.0357

www.anm-mgmt.com



MARK VANDERLOO

Height 6'1" / 185cm

Chest 38" / 96cm Waist 32" / 81cm Suit 40" / 101cm / 50 Shoes 9.5 US / 43 EU / 9 UK

Hair Salt and Pepper Eyes Blue



anm
MANAGEMENT

1159 Dundas St. E, #148 Toronto, ON M4M 3N9
Email: info@anm-mgmt.com Tel: 1.416.792.0357
www.anm-mgmt.com

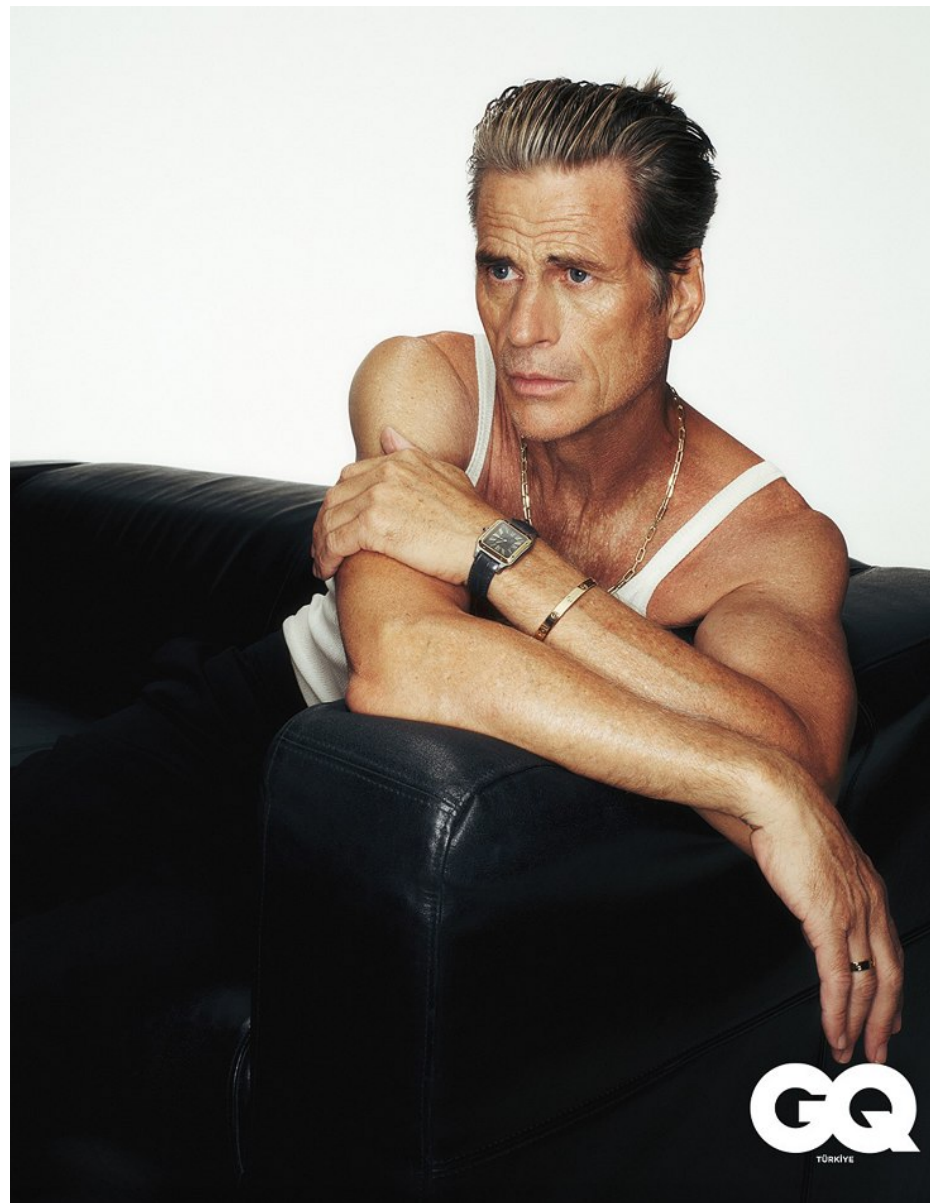


MARK VANDERLOO

Height 6'1" / 185cm

Chest 38" / 96cm Waist 32" / 81cm Suit 40" / 101cm / 50 Shoes 9.5 US / 43 EU / 9 UK

Hair Salt and Pepper Eyes Blue



anm
MANAGEMENT

1159 Dundas St. E, #148 Toronto, ON M4M 3N9
Email: info@anm-mgmt.com Tel: 1.416.792.0357
www.anm-mgmt.com



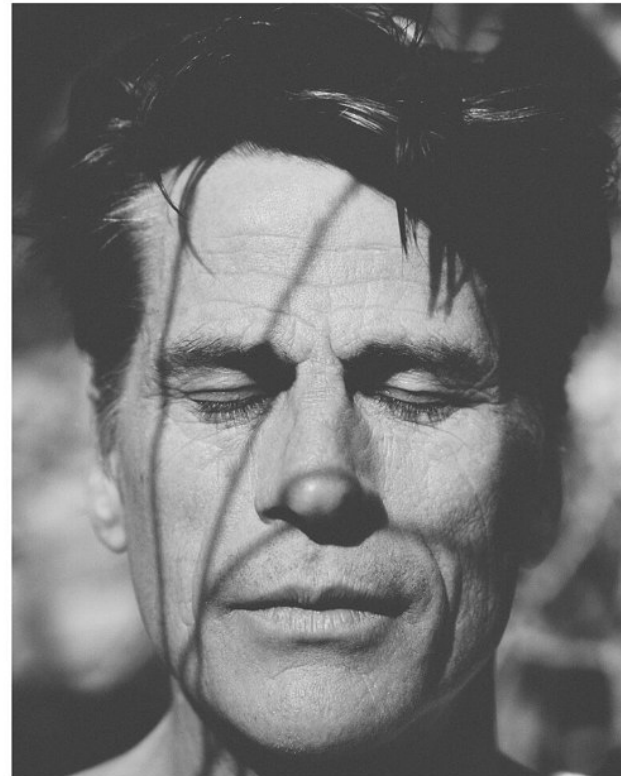
MARK VANDERLOO

Height 6'1" / 185cm

Chest 38" / 96cm Waist 32" / 81cm Suit 40" / 101cm / 50 Shoes 9.5 US / 43 EU / 9 UK

Hair Salt and Pepper Eyes Blue

No.3 - THE CHANGE MAKERS



Left: Issey Miyake
vintage shacket silk
shirt, vintage trousers
Cotone de Garçons,
available for hire at
Agora boutique.

Hair and Make up: Barbara Urra
Photo Assistants: Karim Mancuso,
Paulo Vieira and Deborah Van Weering
Styling Assistant: Bibiotta Liebert
Producer: Georgina Scarborough-Penn
Special thanks to Terra Nova.

91

anm
MANAGEMENT

1159 Dundas St. E, #148 Toronto, ON M4M 3N9
Email: info@anm-mgmt.com Tel: 1.416.792.0357
www.anm-mgmt.com



MARK VANDERLOO

Height 6'1" / 185cm

Chest 38" / 96cm Waist 32" / 81cm Suit 40" / 101cm / 50 Shoes 9.5 US / 43 EU / 9 UK

Hair Salt and Pepper Eyes Blue



anm
MANAGEMENT

1159 Dundas St. E, #148 Toronto, ON M4M 3N9
Email: info@anm-mgmt.com Tel: 1.416.792.0357
www.anm-mgmt.com



MARK VANDERLOO

Height 6'1" / 185cm

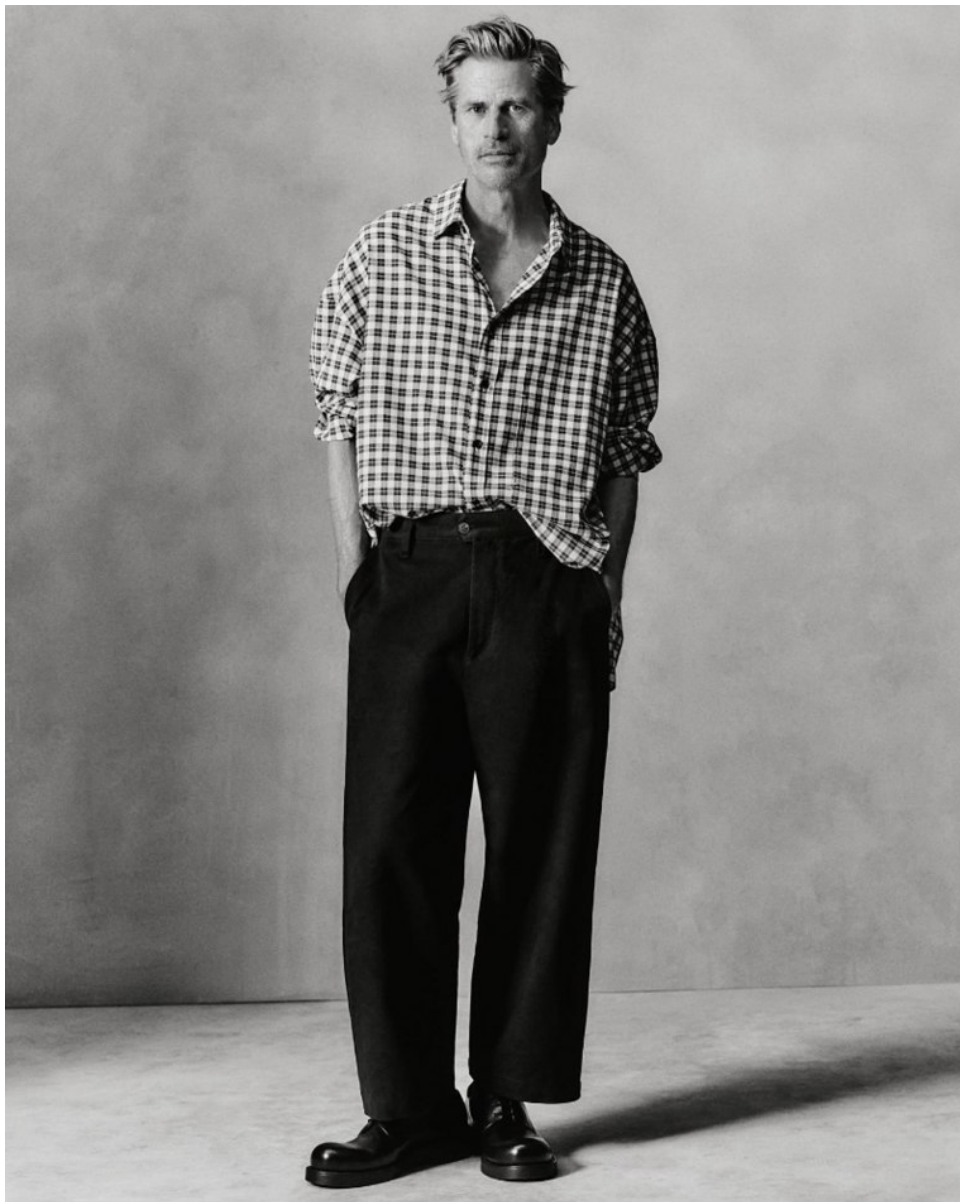
Chest 38" / 96cm Waist 32" / 81cm Suit 40" / 101cm / 50 Shoes 9.5 US / 43 EU / 9 UK

Hair Salt and Pepper Eyes Blue



anm
MANAGEMENT

1159 Dundas St. E, #148 Toronto, ON M4M 3N9
 Email: info@anm-mgmt.com Tel: 1.416.792.0357
www.anm-mgmt.com

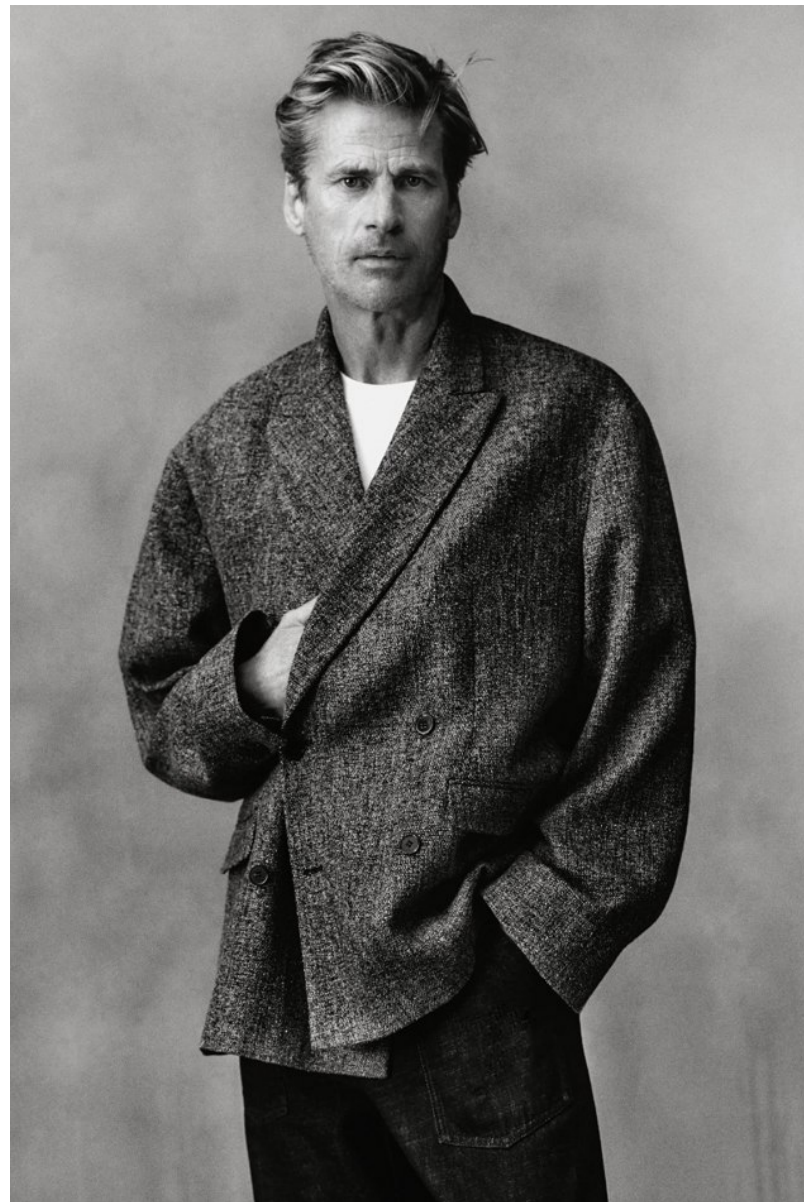


MARK VANDERLOO

Height 6'1" / 185cm

Chest 38" / 96cm Waist 32" / 81cm Suit 40" / 101cm / 50 Shoes 9.5 US / 43 EU / 9 UK

Hair Salt and Pepper Eyes Blue



anm
MANAGEMENT

1159 Dundas St. E, #148 Toronto, ON M4M 3N9
Email: info@anm-mgmt.com Tel: 1.416.792.0357
www.anm-mgmt.com

PHOTOGRAPHY
STEF GALEA

FASHION
CHRISTOPHER MAUL

MARK VANDERLOO

042

043

All clothes, shoes and accessories EMPORIO ARMANI Fall/Winter 2024



048

MARK VANDERLOO

Height 6'1" / 185cm

Chest 38" / 96cm Waist 32" / 81cm Suit 40" / 101cm / 50 Shoes 9.5 US / 43 EU / 9 UK

Hair Salt and Pepper Eyes Blue

anm
MANAGEMENT

1159 Dundas St. E, #148 Toronto, ON M4M 3N9
Email: info@anm-mgmt.com Tel: 1.416.792.0357
www.anm-mgmt.com



MARK VANDERLOO

Height 6'1" / 185cm

Chest 38" / 96cm Waist 32" / 81cm Suit 40" / 101cm / 50 Shoes 9.5 US / 43 EU / 9 UK

Hair Salt and Pepper Eyes Blue



anm
MANAGEMENT

1159 Dundas St. E, #148 Toronto, ON M4M 3N9
Email: info@anm-mgmt.com Tel: 1.416.792.0357
www.anm-mgmt.com



MARK VANDERLOO

Height 6'1" / 185cm

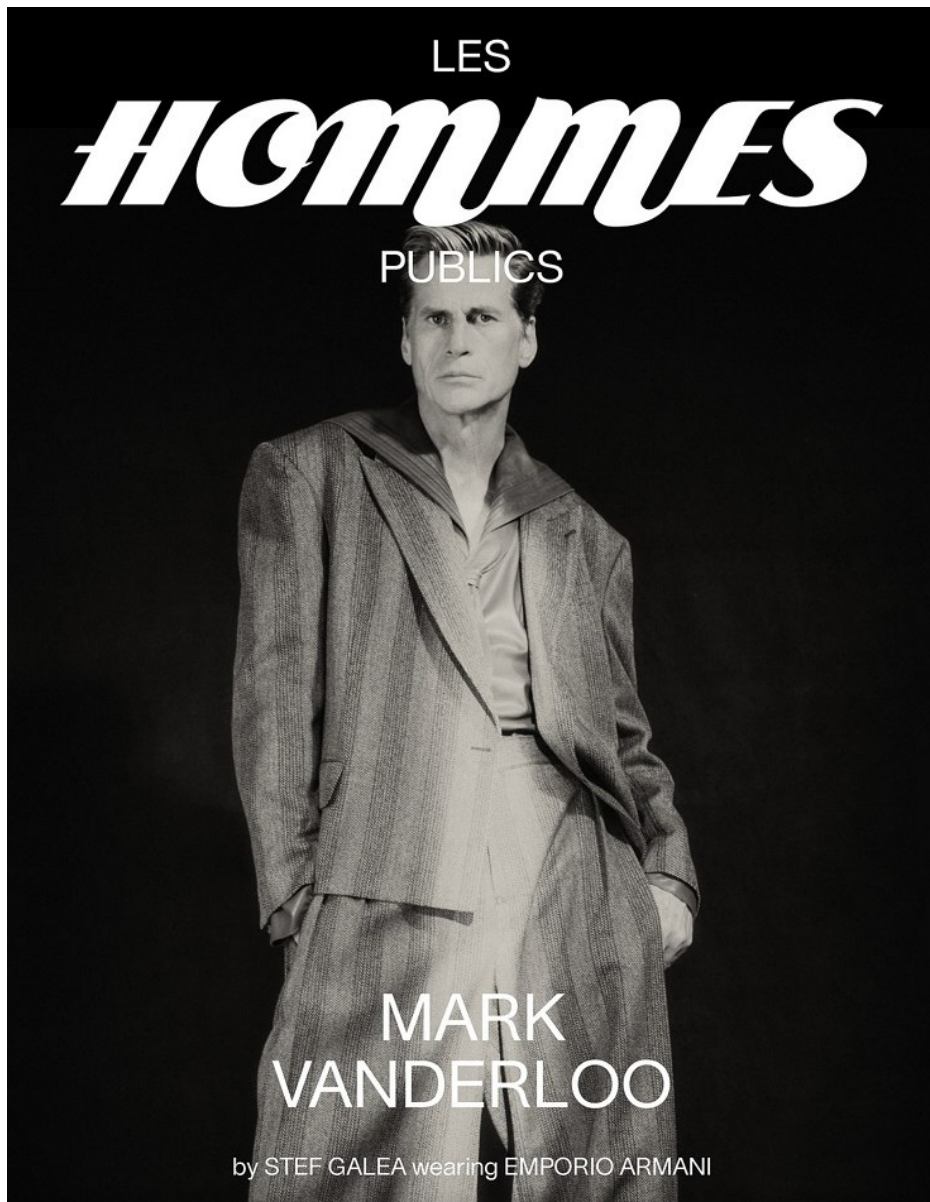
Chest 38" / 96cm Waist 32" / 81cm Suit 40" / 101cm / 50 Shoes 9.5 US / 43 EU / 9 UK

Hair Salt and Pepper Eyes Blue



anm
MANAGEMENT

1159 Dundas St. E, #148 Toronto, ON M4M 3N9
Email: info@anm-mgmt.com Tel: 1.416.792.0357
www.anm-mgmt.com



MARK VANDERLOO

Height 6'1" / 185cm

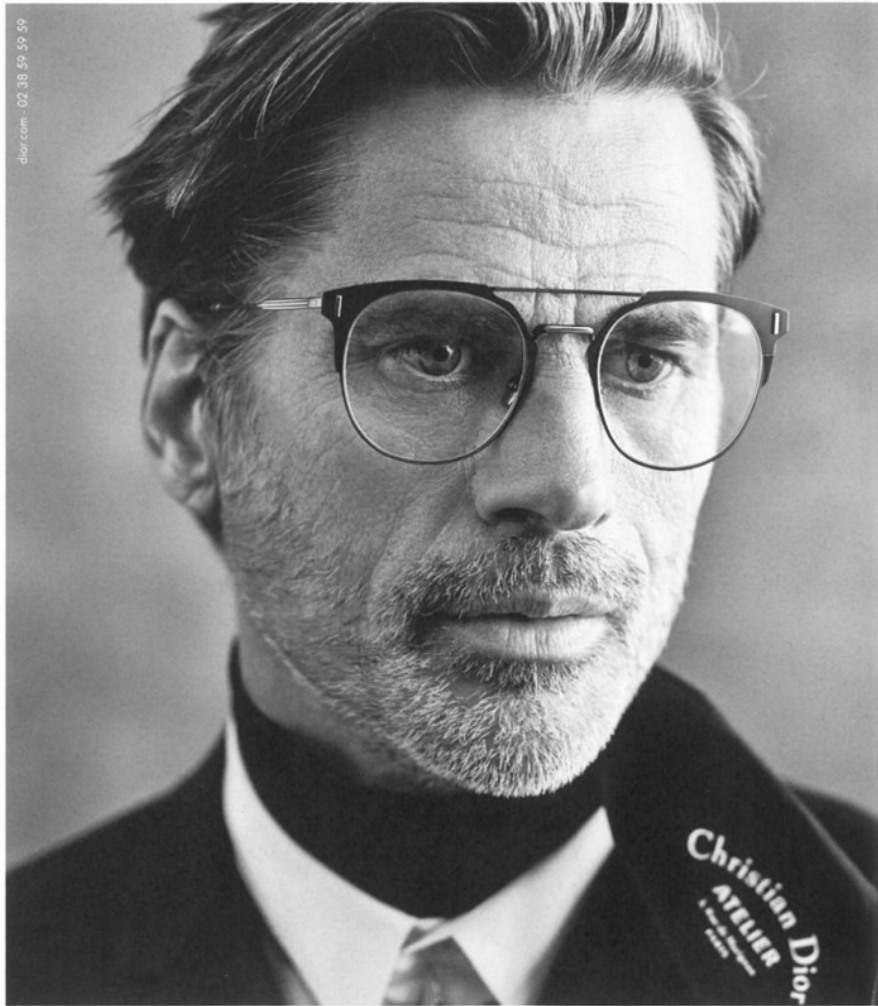
Chest 38" / 96cm Waist 32" / 81cm Suit 40" / 101cm / 50 Shoes 9.5 US / 43 EU / 9 UK

Hair Salt and Pepper Eyes Blue



anm
MANAGEMENT

1159 Dundas St. E, #148 Toronto, ON M4M 3N9
Email: info@anm-mgmt.com Tel: 1.416.792.0357
www.anm-mgmt.com



DIOR

MARK VANDERLOO

Height 6'1" / 185cm

Chest 38" / 96cm Waist 32" / 81cm Suit 40" / 101cm / 50 Shoes 9.5 US / 43 EU / 9 UK

Hair Salt and Pepper Eyes Blue



anm
MANAGEMENT

1159 Dundas St. E, #148 Toronto, ON M4M 3N9
Email: info@anm-mgmt.com Tel: 1.416.792.0357
www.anm-mgmt.com



MARK VANDERLOO

Height 6'1" / 185cm

Chest 38" / 96cm Waist 32" / 81cm Suit 40" / 101cm / 50 Shoes 9.5 US / 43 EU / 9 UK

Hair Salt and Pepper Eyes Blue



Vivienne Westwood AW23-24

anm
MANAGEMENT

1159 Dundas St. E, #148 Toronto, ON M4M 3N9
Email: info@anm-mgmt.com Tel: 1.416.792.0357
www.anm-mgmt.com