



## **SAM WEBB**

Height 6'1" / 185cm

Chest 40" / 101cm Waist 32" / 81cm Inseam 32" / 81cm Suit 40" / 101cm / 50 Shoes 10.5

US / 44.5 EU / 10 UK

Hair Brown Eyes Brown



**anm**  
MANAGEMENT

1159 Dundas St. E, #148 Toronto, ON M4M 3N9  
Email: [info@anm-mgmt.com](mailto:info@anm-mgmt.com) Tel: 1.416.792.0357

[www.anm-mgmt.com](http://www.anm-mgmt.com)





**SAM WEBB**

Height 6'1" / 185cm

Chest 40" / 101cm Waist 32" / 81cm Inseam 32" / 81cm Suit 40" / 101cm / 50 Shoes 10.5 US / 44.5 EU / 10 UK

Hair Brown Eyes Brown



**anm**  
MANAGEMENT

1159 Dundas St. E, #148 Toronto, ON M4M 3N9

Email: [info@anm-mgmt.com](mailto:info@anm-mgmt.com) Tel: 1.416.792.0355

[www.anm-mgmt.com](http://www.anm-mgmt.com)





STIL

# BUNTE REPUBLIK DEUTSCH- LAND

Sechs der besten  
Männermodemacher  
hierzulande haben  
für Frühjahr und  
Sommer ANZÜGE  
IN STARKEN  
FARBEN entworfen,  
in denen Sie garanti-  
ert Eindruck  
machen werden

fotos  
THOMAS VON AAGH  
produktion  
RONALD BECKER

## SAM WEBB

Height 6'1" / 185cm

Chest 40" / 101cm Waist 32" / 81cm Inseam 32" / 81cm Suit 40" / 101cm / 50 Shoes 10.5

US / 44.5 EU / 10 UK

Hair Brown Eyes Brown



### S. OLIVER BLACK LABEL

Möchten Sie einen Anzug,  
der sich so bequem trägt  
wie ein Sport-Outfit? Den  
„Jogg-Suit“ aus weichem  
Stretchjersey gab es in den  
vergangenen Saisons schon  
in Schwarz, Grau und  
Blau. Neu ist Tomatenrot.

Anzug aus Viskose, Kunst-  
und Stretchfaser, ungefü-  
tertes Sakko, ca. 140 Euro.  
Hose mit Turnnetz, ca.  
60 Euro; Baumwollhemd,  
ca. 40 Euro; gestreifte  
Krawatte aus Baumwolle  
und Kunstfaser, ca. 30 Euro

### JOOP!

Kombinieren Sie diesen  
graublauen Anzug für  
Business-Termine mit  
Hemd, Krawatte und  
Schuivern. Mit weißem  
T-Shirt und weißen  
Retro-Sneakers ist er  
genau richtig für eine  
elegante Sommerparty!

Fein kariertes Anzug aus  
Schur- und Baumwolle,  
doppelreihiges Jackett,  
Hose mit Aufschlag, zusam-  
men ca. 500 Euro; T-Shirt  
aus Baumwolle mit V-Aus-  
schnitt, ca. 40 Euro; Kette  
aus geschwärztem Metall,  
ca. 100 Euro; Sneakers aus  
Kalbsleder, ca. 140 Euro

99

**anm**  
MANAGEMENT

1159 Dundas St. E, #148 Toronto, ON M4M 3N9  
Email: info@anm-mgmt.com Tel: 1.416.792.0357  
www.anm-mgmt.com

Style+



◀ Sam wears white shirt with pearl cuff button DOWN, ring NOBLE'S OWN  
▶ Heart pendant necklace STRANGE FRUIT, gold chain necklace EDGE ON SIX, both available at WOLFENDRADGER.COM UK, jersey t-shirt RAG & BONE, black jeans SCOTCH & SODA, rings PYRELLA

## SAM WEBB

Height 6'1" / 185cm

Chest 40" / 101cm Waist 32" / 81cm Inseam 32" / 81cm Suit 40" / 101cm / 50 Shoes 10.5

US / 44.5 EU / 10 UK

Hair Brown Eyes Brown



THE PERFECT MAN

**anm**  
MANAGEMENT

1159 Dundas St. E, #148 Toronto, ON M4M 3N9  
Email: [info@anm-mgmt.com](mailto:info@anm-mgmt.com) Tel: 1.416.792.0357  
[www.anm-mgmt.com](http://www.anm-mgmt.com)





## **SAM WEBB**

Height 6'1" / 185cm

Chest 40" / 101cm Waist 32" / 81cm Inseam 32" / 81cm Suit 40" / 101cm / 50 Shoes 10.5

US / 44.5 EU / 10 UK

Hair Brown Eyes Brown



**anm**  
MANAGEMENT

1159 Dundas St. E, #148 Toronto, ON M4M 3N9  
Email: [info@anm-mgmt.com](mailto:info@anm-mgmt.com) Tel: 1.416.792.0357

[www.anm-mgmt.com](http://www.anm-mgmt.com)





## **SAM WEBB**

Height 6'1" / 185cm

Chest 40" / 101cm Waist 32" / 81cm Inseam 32" / 81cm Suit 40" / 101cm / 50 Shoes 10.5

US / 44.5 EU / 10 UK

Hair *Brown* Eyes *Brown*



**anm**  
MANAGEMENT

1159 Dundas St. E, #148 Toronto, ON M4M 3N9

Email: [info@anm-mgmt.com](mailto:info@anm-mgmt.com) Tel: 1.416.792.0357

[www.anm-mgmt.com](http://www.anm-mgmt.com)





## **SAM WEBB**

Height 6'1" / 185cm

Chest 40" / 101cm Waist 32" / 81cm Inseam 32" / 81cm Suit 40" / 101cm / 50 Shoes 10.5

US / 44.5 EU / 10 UK

Hair *Brown* Eyes *Brown*



**anm**  
MANAGEMENT

1159 Dundas St. E, #148 Toronto, ON M4M 3N9

Email: [info@anm-mgmt.com](mailto:info@anm-mgmt.com) Tel: 1.416.792.0357

[www.anm-mgmt.com](http://www.anm-mgmt.com)



## **SAM WEBB**

Height 6'1" / 185cm

Chest 40" / 101cm Waist 32" / 81cm Inseam 32" / 81cm Suit 40" / 101cm / 50 Shoes 10.5

US / 44.5 EU / 10 UK

Hair Brown Eyes Brown



**anm**  
MANAGEMENT

1159 Dundas St. E, #148 Toronto, ON M4M 3N9

Email: [info@anm-mgmt.com](mailto:info@anm-mgmt.com) Tel: 1.416.792.0357

[www.anm-mgmt.com](http://www.anm-mgmt.com)





## ***SAM WEBB***

*Height 6'1" / 185cm*

*Chest 40" / 101cm Waist 32" / 81cm Inseam 32" / 81cm Suit 40" / 101cm / 50 Shoes 10.5*

*US / 44.5 EU / 10 UK*

*Hair Brown Eyes Brown*



**anm**  
MANAGEMENT

1159 Dundas St. E, #148 Toronto, ON M4M 3N9

Email: [info@anm-mgmt.com](mailto:info@anm-mgmt.com) Tel: 1.416.792.0357

[www.anm-mgmt.com](http://www.anm-mgmt.com)



## ***SAM WEBB***

Height *6'1" / 185cm*

Chest *40" / 101cm* Waist *32" / 81cm* Inseam *32" / 81cm* Suit *40" / 101cm / 50* Shoes *10.5*  
*US / 44.5 EU / 10 UK*

Hair *Brown* Eyes *Brown*



**anm**  
MANAGEMENT

1159 Dundas St. E, #148 Toronto, ON M4M 3N9  
Email: [info@anm-mgmt.com](mailto:info@anm-mgmt.com) Tel: 1.416.792.0357  
[www.anm-mgmt.com](http://www.anm-mgmt.com)





## **SAM WEBB**

Height 6'1" / 185cm

Chest 40" / 101cm Waist 32" / 81cm Inseam 32" / 81cm Suit 40" / 101cm / 50 Shoes 10.5

US / 44.5 EU / 10 UK

Hair *Brown* Eyes *Brown*

**anm**  
MANAGEMENT

1159 Dundas St. E, #148 Toronto, ON M4M 3N9  
Email: [info@anm-mgmt.com](mailto:info@anm-mgmt.com) Tel: 1.416.792.0357  
[www.anm-mgmt.com](http://www.anm-mgmt.com)



## **SAM WEBB**

Height 6'1" / 185cm

Chest 40" / 101cm Waist 32" / 81cm Inseam 32" / 81cm Suit 40" / 101cm / 50 Shoes 10.5

US / 44.5 EU / 10 UK

Hair Brown Eyes Brown



**anm**  
MANAGEMENT

1159 Dundas St. E, #148 Toronto, ON M4M 3N9  
Email: [info@anm-mgmt.com](mailto:info@anm-mgmt.com) Tel: 1.416.792.0357  
[www.anm-mgmt.com](http://www.anm-mgmt.com)





## ***SAM WEBB***

Height *6'1" / 185cm*

Chest *40" / 101cm* Waist *32" / 81cm* Inseam *32" / 81cm* Suit *40" / 101cm / 50* Shoes *10.5*

*US / 44.5 EU / 10 UK*

Hair *Brown* Eyes *Brown*



**anm**  
MANAGEMENT

1159 Dundas St. E, #148 Toronto, ON M4M 3N9  
Email: [info@anm-mgmt.com](mailto:info@anm-mgmt.com) Tel: 1.416.792.0357  
[www.anm-mgmt.com](http://www.anm-mgmt.com)



## **SAM WEBB**

Height *6'1" / 185cm*

Chest *40" / 101cm* Waist *32" / 81cm* Inseam *32" / 81cm* Suit *40" / 101cm / 50* Shoes *10.5*

*US / 44.5 EU / 10 UK*

Hair *Brown* Eyes *Brown*



**anm**  
MANAGEMENT

1159 Dundas St. E, #148 Toronto, ON M4M 3N9  
Email: [info@anm-mgmt.com](mailto:info@anm-mgmt.com) Tel: 1.416.792.0357  
[www.anm-mgmt.com](http://www.anm-mgmt.com)





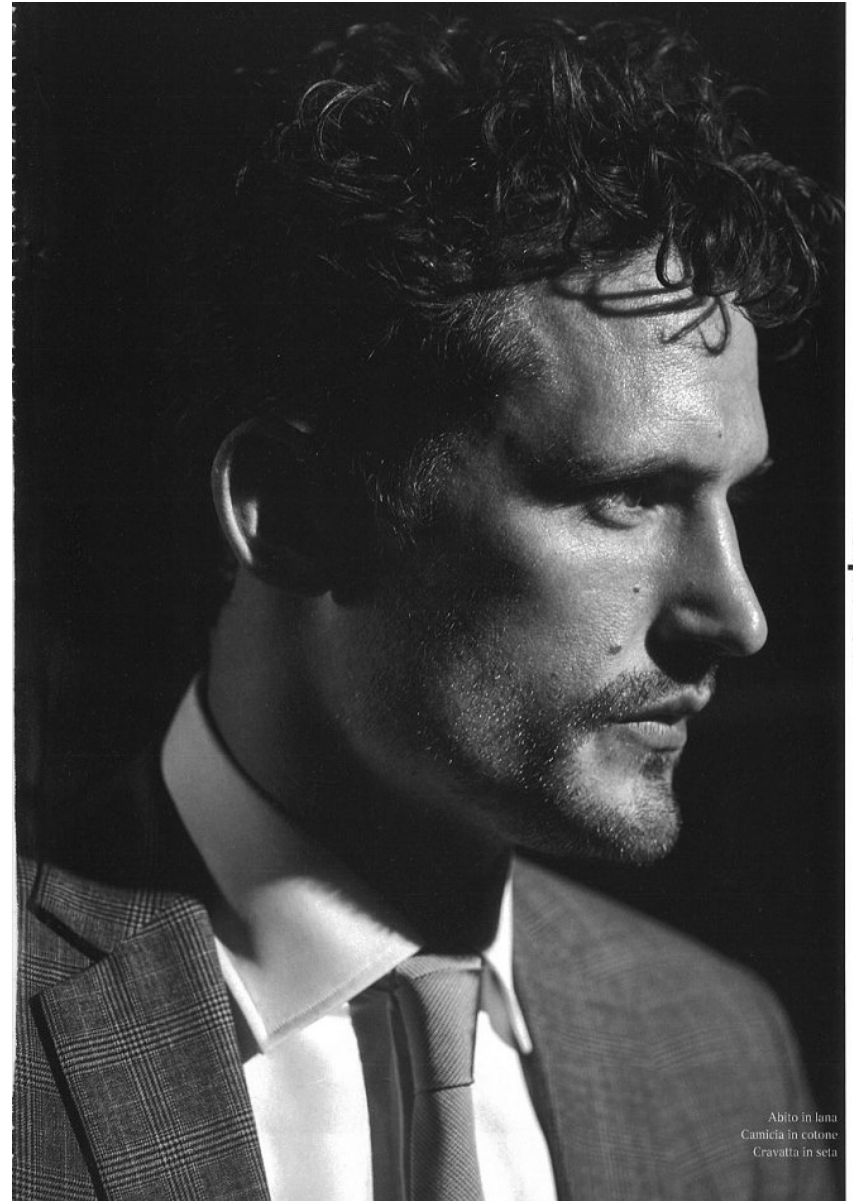
## SAM WEBB

Height 6'1" / 185cm

Chest 40" / 101cm Waist 32" / 81cm Inseam 32" / 81cm Suit 40" / 101cm / 50 Shoes 10.5

US / 44.5 EU / 10 UK

Hair Brown Eyes Brown



Dsquared2

Abito in lana  
Camicia in cotone  
Cravatta in seta

**anm**  
MANAGEMENT

1159 Dundas St. E, #148 Toronto, ON M4M 3N9  
Email: [info@anm-mgmt.com](mailto:info@anm-mgmt.com) Tel: 1.416.792.0357  
[www.anm-mgmt.com](http://www.anm-mgmt.com)





Dsquared2



## **SAM WEBB**

Height 6'1" / 185cm

Chest 40" / 101cm Waist 32" / 81cm Inseam 32" / 81cm Suit 40" / 101cm / 50 Shoes 10.5

US / 44.5 EU / 10 UK

Hair Brown Eyes Brown

**anm**  
MANAGEMENT

1159 Dundas St. E, #148 Toronto, ON M4M 3N9  
Email: [info@anm-mgmt.com](mailto:info@anm-mgmt.com) Tel: 1.416.792.0357  
[www.anm-mgmt.com](http://www.anm-mgmt.com)