



SETH DODGINGHORSE

Height 6'1" / 185cm

Chest 35" / 89cm Waist 31.5" / 80cm Inseam 34" / 86cm Suit 37" / 94cm / 47 Shoes 11.5

US / 46 EU / 11 UK

Hair Brown Eyes Brown



anm
MANAGEMENT

1159 Dundas St. E, #148 Toronto, ON M4M 3N9
Email: info@anm-mgmt.com Tel: 1.416.792.0357
www.anm-mgmt.com



SETH DODGINGHORSE

Height 6'1" / 185cm

Chest 35" / 89cm Waist 31.5" / 80cm Inseam 34" / 86cm Suit 37" / 94cm / 47 Shoes 11.5

US / 46 EU / 11 UK

Hair Brown Eyes Brown



BARENA VENEZIA Wool
Sweater, \$405

Fall Trends

*From big shoes to bright blues,
here are five trends we're
going to be seeing more of in
the coming months (and we
encourage you to try).*

01. NEW BLUES

Move aside navy, this season we've discovered the joy of wearing bolder hues of blue during the fall and winter. Cerulean Blue, as pictured here in all its bright brilliance, is a colour that alludes to the sky and sea of the summer months. Between piercing knitwear pieces, standout outerwear and striking cold-weather accessories, these eye-catching shades aren't going anywhere despite summer's end.

Photography by KYLE WILSON Styling CHUNYU YUAN,
BRIDGET PINEIDA Grooming SOPHIE HSIN (PLUTINO)
Model SETH (ANITA NORRIS)

anm
MANAGEMENT

1159 Dundas St. E, #148 Toronto, ON M4M 3N9
Email: info@anm-mgmt.com Tel: 1.416.792.0357
www.anm-mgmt.com



SETH DODGINGHORSE

Height 6'1" / 185cm

Chest 35" / 89cm Waist 31.5" / 80cm Inseam 34" / 86cm Suit 37" / 94cm / 47 Shoes 11.5

US / 46 EU / 11 UK

Hair Brown Eyes Brown



anm
MANAGEMENT

1159 Dundas St. E, #148 Toronto, ON M4M 3N9
Email: info@anm-mgmt.com Tel: 1.416.792.0357
www.anm-mgmt.com



SETH DODGINGHORSE

Height 6'1" / 185cm

Chest 35" / 89cm Waist 31.5" / 80cm Inseam 34" / 86cm Suit 37" / 94cm / 47 Shoes 11.5

US / 46 EU / 11 UK

Hair Brown Eyes Brown



PATRICK ASSARAF Car Coat, \$995;
Overshirt, \$1,295; Sweater, \$395;
Pants, \$495

BUILDING BLOCKS

HOW PATRICK ASSARAF TURNS 'BASICS' INTO 'ESSENTIALS'

*With outerwear, soft tailoring, and more,
Canada's everyday luxury brand has risen
to the next level.*

Words
Logan Ross

Photography by MATT WATKINS Styling CHUNYU YUAN, KARYSSA PAEZ
Grooming SOPHIE HSIN (PLUTINO) Model SETH (ANITA NORRIS)

anm
MANAGEMENT

1159 Dundas St. E, #148 Toronto, ON M4M 3N9
Email: info@anm-mgmt.com Tel: 1.416.792.0357
www.anm-mgmt.com



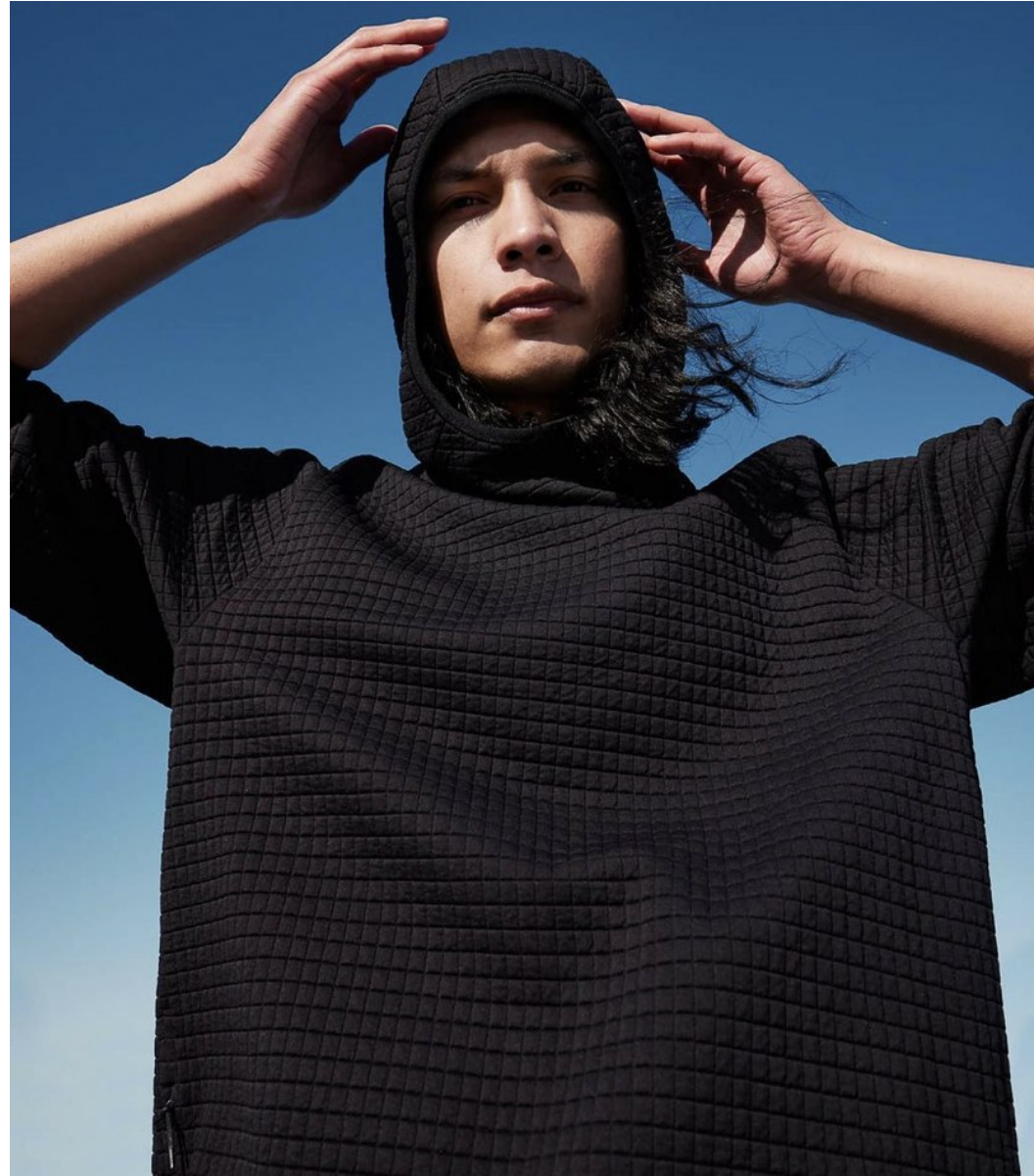
SETH DODGINGHORSE

Height *6'1" / 185cm*

Chest *35" / 89cm* Waist *31.5" / 80cm* Inseam *34" / 86cm* Suit *37" / 94cm / 47* Shoes *11.5*

US / 46 EU / 11 UK

Hair *Brown* Eyes *Brown*



anm
MANAGEMENT

1159 Dundas St. E, #148 Toronto, ON M4M 3N9
Email: info@anm-mgmt.com Tel: 1.416.792.0357

www.anm-mgmt.com



SETH DODGINGHORSE

Height 6'1" / 185cm

Chest 35" / 89cm Waist 31.5" / 80cm Inseam 34" / 86cm Suit 37" / 94cm / 47 Shoes 11.5

US / 46 EU / 11 UK

Hair Brown Eyes Brown



anm
MANAGEMENT

1159 Dundas St. E, #148 Toronto, ON M4M 3N9
Email: info@anm-mgmt.com Tel: 1.416.792.0357
www.anm-mgmt.com



SETH DODGINGHORSE

Height *6'1" / 185cm*

Chest *35" / 89cm* Waist *31.5" / 80cm* Inseam *34" / 86cm* Suit *37" / 94cm / 47* Shoes *11.5*

US / 46 EU / 11 UK

Hair *Brown* Eyes *Brown*

anm
MANAGEMENT

1159 Dundas St. E, #148 Toronto, ON M4M 3N9
Email: info@anm-mgmt.com Tel: 1.416.792.0357
www.anm-mgmt.com